

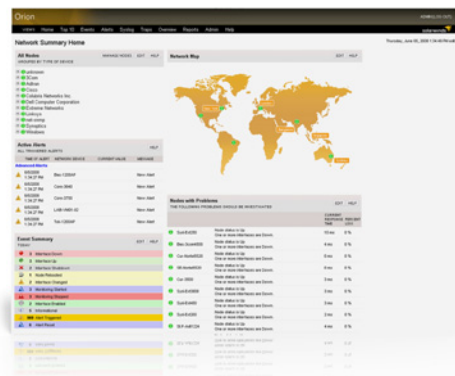
# Orion Network Performance Monitor

FAULT & PERFORMANCE MANAGEMENT

## Put Network Complexity in Its Place with Orion NPM

*“We’ve been using [Orion NPM] for over 5 years now as our primary network management system. It’s **easy to use** for both network engineers and NOC or field personell — **no training required**. It’s **rich with features** and... there are **constant improvements** to this product that keep making it better.”*

*- cnorborg,  
posted 4/15/09 on solarwinds.com*



You’ve got a tough job. Your mission – which yes, you already chose to accept – is to deliver 100% availability of all network resources and to keep a close eye on the performance of every device, server, and application in your infrastructure, while everything is constantly changing (of course). It’s not easy. But if you could design a network monitoring solution to make your life easier, what would it be? Quick to set up? Elegantly simple to use? Scalable to accommodate your network growth? Supported by a global community of network engineers like you? And inexpensive?

It’s not that we’re psychic. We were founded by network engineers who know what it takes to manage complex networks; they pooled all of their “what if’s” and designed Orion® Network Performance Monitor (NPM): a comprehensive, web-enabled, fault and performance management solution that gives you broad visibility across your network.

Orion NPM enables you to quickly detect, diagnose, and resolve network performance problems and outages. Out-of-the-box, it offers network-centric views that are designed to deliver the critical information network engineers need. Also, Orion NPM is the easiest product of its kind to use and maintain, meaning you will spend more time actually managing networks, not supporting Orion NPM.

### Orion NPM Highlights:

- Monitors and analyzes **real-time, in-depth, network performance statistics** for routers, switches, wireless access points, servers, and any other SNMP-enabled devices
- Provides a highly **intuitive, customizable web interface** with point-and-click simplicity and support for multiple views by user and department
- Simplifies issue investigation with **drill-down maps** and Top 10 views of your global network
- Gets you up and running in less than an hour with **do-it-yourself deployment**
- Scales to **accommodate growth** and management needs with a hot standby engine, multiple polling engines, and additional web servers
- Enables **advanced alerting** for correlated events, sustained conditions, and complex combinations of device states
- Monitors the **energy consumption of Cisco® EnergyWise-enabled network devices** and displays policies that regulate energy consumption
- **Extends management capabilities** to NetFlow traffic analysis, VoIP monitoring, IP address management, network configuration management, and application and server performance
- Leverages a Universal Device Poller to **monitor virtually any statistic** on SNMP-enabled devices
- Delivers **integrated community support**, providing the assistance you need from thousands of network engineers on thwack, SolarWinds’ community site

# Orion NPM Features

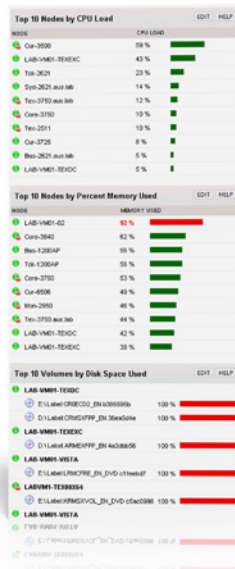
## Performance & Fault Management

Orion NPM provides comprehensive performance, fault management, and network availability tools to ensure that your network is always running at peak performance. Via a cutting-edge web interface, Orion NPM gives you a unified view into the performance of thousands of nodes and interfaces on your network. From a single web page, you can monitor performance management metrics from any SNMP-enabled device, including routers, switches, firewalls, and servers. Commonly monitored metrics include bandwidth utilization, packet loss, latency, errors, discards, and quality of service. With Orion NPM, you get the information you need to quickly fix issues before your users ever have a chance to call the help desk.



*“Orion has **everything** we were looking for in one package, with a customizable web interface for quick ‘at a glance’ views, e-mail threshold notifications, custom SNMP polling, and network uptime statistics.”*

*- Spencer Furey  
PMG, Inc.*



## Intuitive Point-and-Click Interface – IMPROVED IN V9.5

When you need critical network information fast, you can't waste time trying to reverse-engineer the thought process of whoever designed the cryptic user interface of your network management software. Orion NPM's interface was designed by network engineers, for network engineers. The highly intuitive, fully customizable web-based interface offers point-and-click simplicity and allows you to remotely view network fault, availability, and performance information through detailed graphs, tables, and lists.

You'll love the top 10 lists that give you at-a-glance visibility into the nodes and interfaces experiencing the highest amounts of network traffic, capacity utilization, response time, memory usage, CPU load, disk space volume, and more. Plus, real-time network maps enable you to visualize network health by location, while device troubleshooting displays present critical metrics required to quickly resolve problems with network devices.

## Do-it-Yourself Deployment

Deploying Orion NPM is a simple three-step process. First, install and configure Orion NPM using a simple wizard interface. Next, let Orion NPM automatically discover your network. Finally, begin monitoring your network for fault and performance issues. You'll be done in less than an hour. No consultants required. Even better, with Orion NPM's intuitive web interface, you won't need to attend training classes, read books with large animals on the cover, or pour through manuals to start being productive with Orion NPM from day one.

## Advanced Alerting

Orion NPM enables you to quickly and easily configure powerful network alert engines to respond to hundreds of different network scenarios, including multiple condition checks. These network alerts help you recognize and correct issues before your users experience performance degradation or availability issues. With alerting support for correlated events and sustained conditions, Orion NPM ensures that you don't get paged at 3am unless there is a critical issue. Additionally, Orion NPM can automatically escalate network alerts until a problem is resolved.

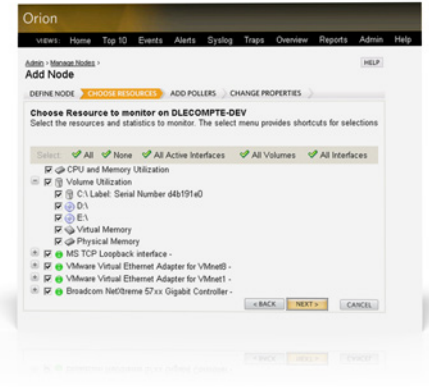
MODEL	MANAGES:
SL100	Up to 100 elements
SL250	Up to 250 elements
SL500	Up to 500 elements
SL2000	Up to 2000 elements
SLX	Unlimited elements

### Integrated Wireless Poller – NEW IN V9.5

While we all love the convenience of wireless, this technology can give you a headache like no other! Trying to monitor, secure, and support the multitude of wireless devices on the market today is a nearly impossible task... unless, of course, you have Orion NPM. Orion NPM's Integrated Wireless Poller enables you to easily manage wireless thin and autonomous access points and their associated clients. Orion NPM can monitor your wireless devices alongside your wired devices and provide you with alerts, reports, and Top 10 lists for your wireless infrastructure!

### Universal Device Poller – NEW IN V9

Out of the box, Orion NPM ships with a MIB database that covers the vast majority of common network devices. But for that handful of odd devices that are lurking in your network – or for newer devices that have MIB tables – you can now collect valuable and highly detailed management data. Orion NPM makes it easy to create a custom poller to monitor any SNMP-enabled device value that has a MIB, including virtually any statistic that a network device records. You can also customize how you want the collected data displayed for graphing, alerting, and reporting purposes. And, using the MIB Transformation Wizard, you can convert MIB values into the units of measurement that are most useful to you.



### VMware® Virtualization Monitoring

Orion NPM gives you deep visibility into your VMware ESX servers, virtual machine instances, and VirtualCenter. Orion NPM communicates directly with VMware ESX servers to determine how the host server is performing and to gauge the health of guest virtual machines. Orion NPM reads host MIB information from each VMware ESX server and its corresponding virtual machines, detailing statistics such as CPU utilization, memory utilization, disk usage, and much more. With Orion NPM, you can ensure that your virtualization environment is running smoothly and delivering a high quality of service.



### Cisco EnergyWise Monitoring – NEW IN V9.5

Cisco® EnergyWise focuses on reducing the energy consumption of all devices connected to a Cisco network ranging from Power over Ethernet (PoE) devices, such as IP phones and wireless access points, to IP-enabled building and lighting controllers. EnergyWise technology gives you a framework for discovering, monitoring, optimizing, advising, and regulating energy needs for your business. Cisco EnergyWise encompasses a highly intelligent, network-based approach to communicate messages that control energy between network devices and endpoints.

### Role-based Access Control

Orion Network Performance Monitor (NPM) allows you to establish unique accounts and specify which types of information are displayed within the Orion interface for a particular department, group, or user. This ensures that only the people who need to view specific information have access to it, providing an increased level of internal security. For example, Orion NPM can be configured so that the server team only sees the servers, while the Texas IT group has a view limited to the geography for which they are responsible.

### Orion NPM Modules:

- Application Performance Monitor
- IP Address Manager
- NetFlow Traffic Analyzer
- IP SLA Manager

Orion NPM modules extend the capabilities of Orion NPM to network traffic analysis, VoIP infrastructure monitoring, IP address management, and server and application monitoring.

### System Requirements

CPU Speed: 3.0 GHz; Hard Drive Space: 20 GB; Memory: 3 GB; Operating System: Windows 2003/2008 Server (32-bit or 64-bit) including R2, with IIS installed; .NET 3.5 Framework; Database: SQL Server 2005 SP1 / 2008 (Express, Standard, or Enterprise)