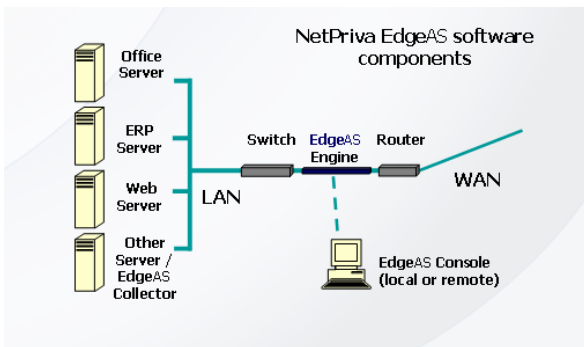
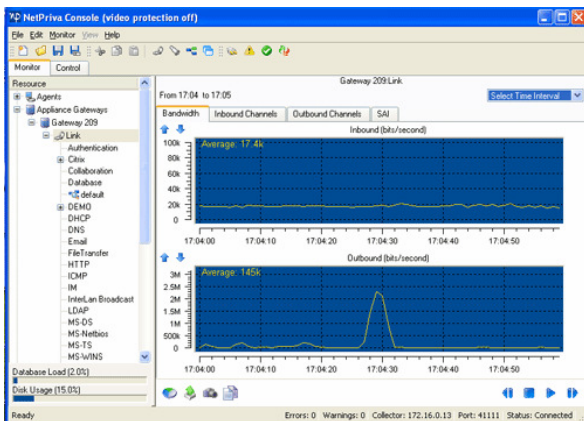


NetPriva EdgeAS™ Technical Data Sheet

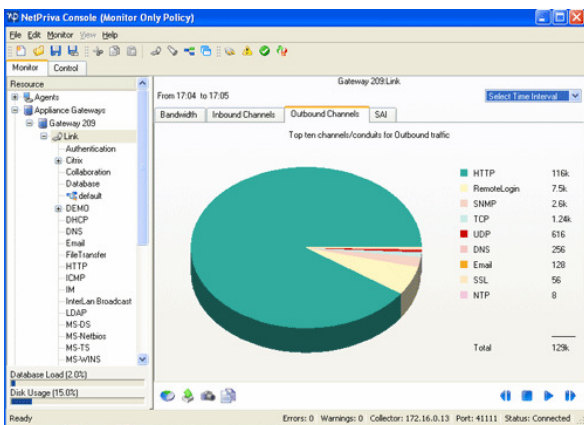
NetPriva EdgeAS traffic shaping appliance software runs on a variety of hardware platforms to provide bandwidth guarantees to wide area network business applications.



Management Console - *per second* monitoring visibility



Management Console - monitoring with drill down



NetPriva EdgeAS specifications:

Install location(s)	WAN congestion points
Type	Transparent (Layer 2) bridge
Connectivity	Ethernet
Network delay impact	Under 5 ms
Components	QoS Engine, Collector, Console
Key functions	Monitor and shape WAN traffic
Traffic types	TCP, UDP, any IP, others pass through only
Max. data flows	20,000 per second (iMix profile)
Policy settings	Server address or port, min/max bandwidth per application, % of link speed or absolute, application priority, maximum jitter, Citrix ICA priorities, packet marking (DiffServ), drop packet conditions, monitor only, history retention
Monitoring and reporting granularity	<i>Per second</i> for real time and historical network statistics views (Console) and reporting
Application identification	Layers 3 and 4
Monitoring	Inbound and outbound traffic, by source and destination IP address/port, URL, protocol, filter or class, Citrix ICA priorities, TCP round trip time
Statistics data base	Relational data base able to retain network statistics at per second granularity indefinitely, roll up parameters
Management	Windows Console via Ethernet or serial port for out of band management option
Failover facility	PC card for failover to wire in case of hardware or software failure
Hardware requirements	Major brand 1RU or set top servers certified by NetPriva (Hardware Certification List)
Licensing	By bandwidth or by enterprise pack option

More information:

Email: sales@netpriva.com
 Web: www.netpriva.com