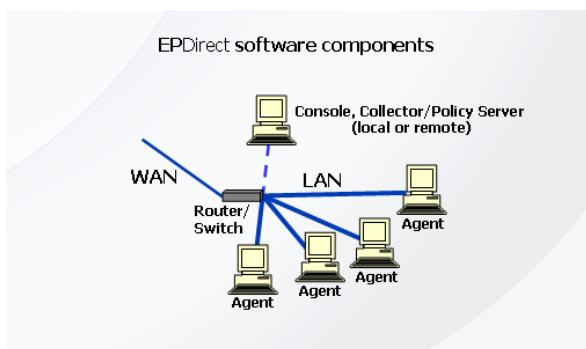
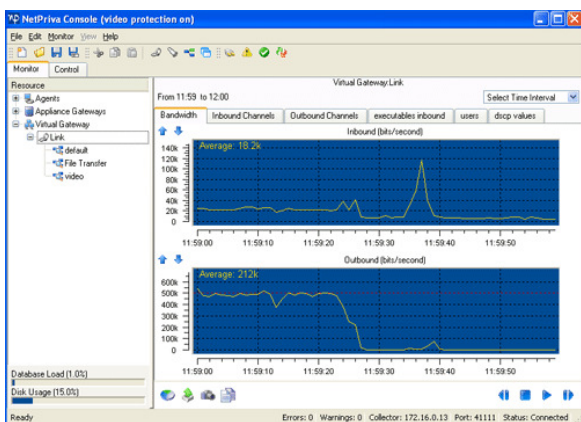


NetPriva EPDirect™ Technical Data Sheet

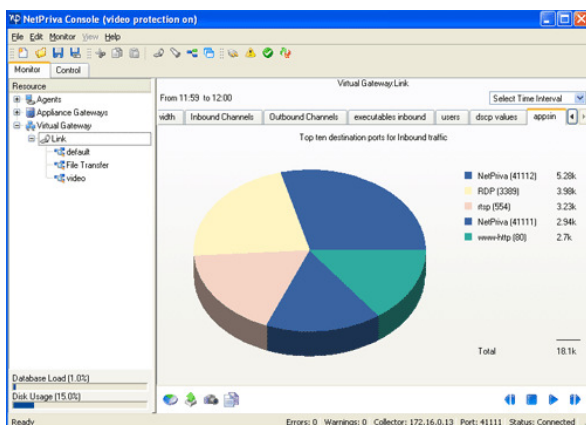
NetPriva EPDirect monitors and shapes wide area network traffic direct to the end points. It is software on remote office and branch office user desktops that provides bandwidth guarantees to important business applications.



Management Console - *per second* monitoring visibility



Management Console - monitoring with drill down



NetPriva EPDirect specifications:

Type	PC software (Windows)
Configuration	One or more (LAN) PCs connected to WAN.
Components	Agent QoS Engine (on each user PC) Collector (on local “always on” PC or server, or on remote server) Console (on local or remote PC)
On-demand Monitoring and Shaping of WAN traffic	On demand monitoring and shaping of Inbound and outbound traffic by application, user, URL*, source and destination IP address/port, protocol, filter or class, Citrix ICA priorities*. TCP round trip time monitoring.
Layer 7++ traffic identification	<i>Deterministic</i> at PC (network end point) by application executable name, user login, and URL* .
Policy settings	Set priority, min/max bandwidth as % of link speed or as absolute, and maximum jitter by application , user , URL* , server address or port. Packet marking (DiffServe), drop packet conditions. Shape traffic or monitor only (on demand). Network statistics retention.
Monitoring and reporting granularity	<i>Per second</i> for real time and historical network statistics views (Console) and reporting.
Statistics data base	Relational data base able to retain network statistics at per second granularity indefinitely, roll up parameters.
Management	Console (local or remote).
Hardware requirements	Windows 2000, Windows XP, Windows XP embedded, or Windows 2003 Server. Collector requires an “always on” PC or server.
Licensing control	By PC seat

More information:

Email: sales@netpriva.com
 Web: www.netpriva.com