



“We needed a tool that would give us capacity information so we can upgrade and downsize circuits...we saved a significant sum last year and this year on downsizing. We’ve saved five times the cost of the Orion product.”

SALLY JO BERNARD
Director of Network Operations
Staples

ORION WIRELESS NETWORK MONITOR CAN BE PURCHASED TO EXTEND THE MONITORING CAPABILITIES OF ORION TO WIRELESS ACCESS POINT ROUTERS AND ASSOCIATED WIRELESS CLIENTS AND SESSIONS.

ACCESS POINT INFORMATION

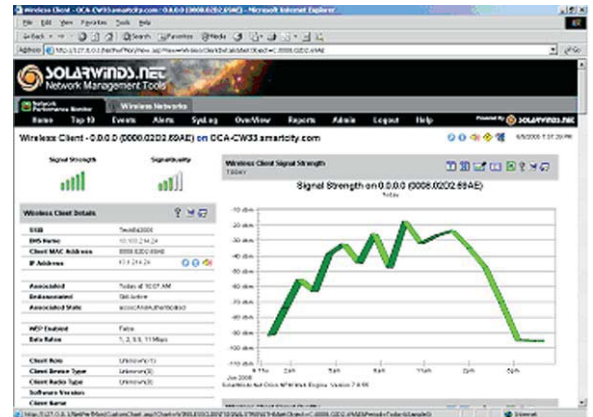
COLLECT AND VIEW REAL-TIME STATUS OF THE 802.11 WIRELESS ACCESS POINT. VIEW CHANNEL AND RADIO INFORMATION, POWER LEVELS AND TRAFFIC. LIST ALL ACCESS POINTS (APs) WITH THE NUMBER OF CLIENTS ASSOCIATED WITH EACH AP. FROM THE WIRELESS ACCESS POINT PAGE, YOU CAN VIEW ALL SESSIONS INCLUDING THEIR SIGNAL STRENGTH, DATA RATE AND MAC ADDRESS. ADDITIONAL INFORMATION AVAILABLE INCLUDE: DEFERRED ENERGY, CRC FRAME ERRORS, DEVICES AUTHENTICATED, DEVICES ROAMED-IN AND DEVICES ACTIVE.

WIRELESS NETWORK MONITOR FEATURES:

- Monitors wireless access point (AP) routers for signal strength and signal quality
- Supports 802.11-compliant APs via standard & vendor-prietary SNMP MIBs
- Monitors client statistics for Cisco and Avaya wireless APs
- Records historical session activity of clients that roam from one AP to another
- Records and graphs errors for the connected wireless devices
- Provides the capability to detect and disable problem users
- Provides fault and performance management for your wireless network

CLIENT & SESSION INFORMATION

Orion Wireless Network Monitor tracks client and session data both historically and in real time. View the historical activity of a client as he roamed from AP to AP. Graph his signal strength and signal quality over time. View his activity today or total bytes transmitted and received last month. Orion even has the ability to enter a MAC address and search the real-time activity for the IP address and SSID of the targeted client.



WIRELESS NETWORK MAPS

With the Orion Map Maker application included in Orion you can create a wireless network map of your entire wireless environment. Access point radios will change color based on their availability. You can even display the channel the AP is transmitting on as well as the number of current sessions. Maps can be layered allowing you to view a country, region, campus, building and floor. Maps are refreshed on the Web automatically, providing the ideal NOC view of the network.



PERFORMANCE STATISTICS

Wireless Network Monitor collects and archives statistics on client and session data as well as AP and network data. View the number and bandwidth utilization of clients on each AP or across your entire wireless network. Statistics can be viewed on the Web for today, yesterday, last 7 days, last month, last year or any custom date range. Performance charts include 95th percentile calculations. Clients are also tracked across multiple APs as long as they touch your network.

WIRELESS ERRORS & SYSLOG

Events and syslog message are processed and displayed on the corresponding device Web page. You have immediate access to historical events and network events. The Orion syslog application has extensive filtering and configuration capabilities allowing you to view the events and messages that require action. In the event of a problem, with one click you can Telnet directly into the AP from the Orion Web page.

ORION MONITORS:

- Availability
- Network Latency
- Bandwidth Utilization
- Interface Errors & Discards
- CPU & Memory Utilization
- Volume Usage
- Node, Interface & Volume Status
- Buffer Usage & Errors

ORION MODULES:

- NetFlow Traffic Analyzer - Coming Soon!
- **Wireless Network Monitor**
- Application Monitor
- Hot Standby Engine

SYSTEM REQUIREMENTS

Pentium IV - 1 GHz, 1 GB RAM, 20 GB Hard Drive Space Available, Network Card, Windows 2000/2003 Server
Includes- Microsoft SQL Server 2000 (MSDE)

CONTACT US

For additional information, please contact SolarWinds at 866.530.8100 or e-mail sales@SolarWinds.net. To locate an International reseller near you, visit <http://SolarWinds.net/distributor/locator.html>