

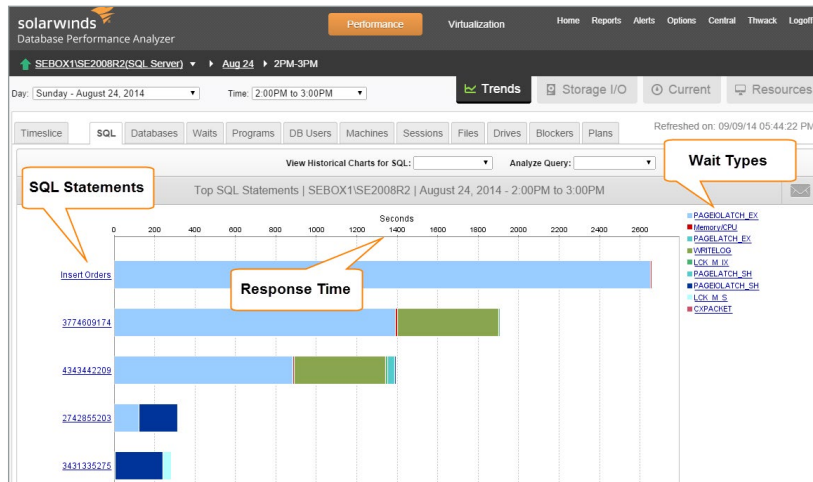


Database Performance Analyzer for SQL Server

SolarWinds® Database Performance Analyzer (formerly Confio Ignite) for SQL Server is a comprehensive database performance monitoring and analysis solution for DBAs, IT managers, and application developers. Database Performance Analyzer eliminates performance bottlenecks, improves application service, and reduces overall cost of SQL Server operations.

Focus On Response Time

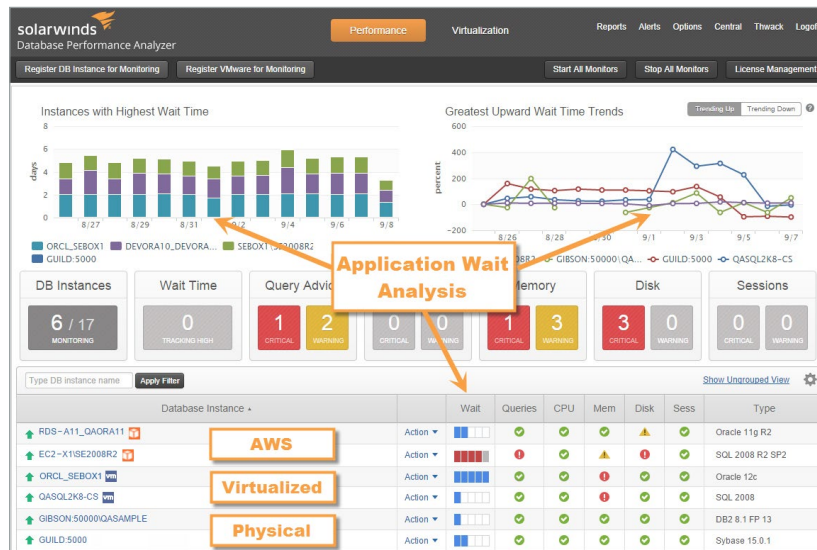
Database Performance Analyzer is different because it focuses on instance response time, finding the root causes of delays inside of SQL Server®. Database Performance Analyzer tracks every query in every session, and captures the SQL Server® wait types that impose delays on the query.



Database Performance Analyzer helps you quickly pinpoint the issues that have the greatest impact on response time.

Supports SQL Server Deployment Options

Monitor and optimize SQL Server from a single view, whether that's on-premise, virtualized, or in the Cloud.



Download a free product trial and start monitoring your environment in minutes.

[DOWNLOAD FREE TRIAL](#)

Fully Functional for 14 Days

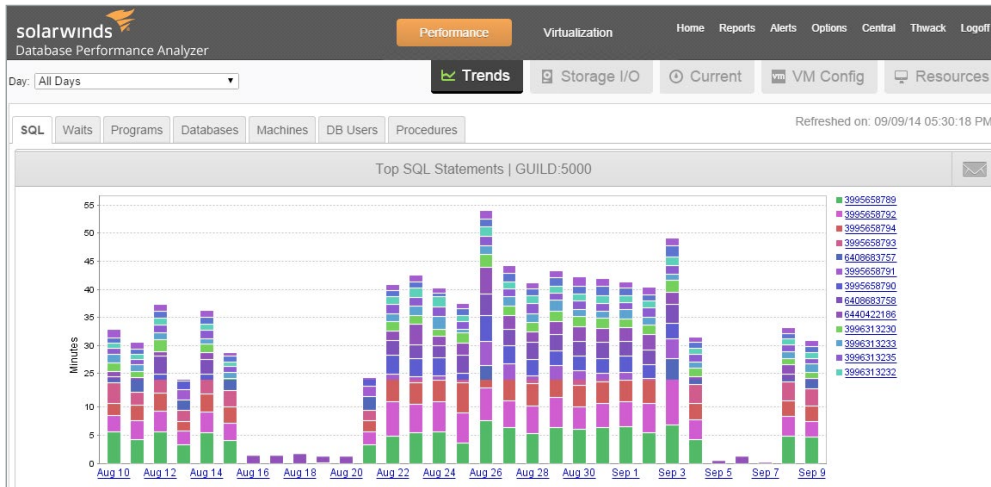
www.SolarWinds.com/DPA-Download

Key Advantages

- Four Clicks to Resolution.** Alarm trail leads DBAs directly to the root cause of the problem in 3 - 4 clicks.
- No Agents. No Tracing.** Less than 1% load on monitored servers makes Database Performance Analyzer the lightest high performance monitoring tool available.
- Multi-Dimensional Performance Analysis™.** Simplifies root cause analysis by correlating SQL statements, context, system and storage health, wait types, and response time
- Resource baselines, alerts, and reports.** Proactively monitor system health, identifying trends before they become problems
- Show the complete picture.** DPA for SQL Server® correlates essential statistics to give an understanding of query bottlenecks, server health, and how session statistics interact—providing a complete performance picture.

Historical Trend Analysis

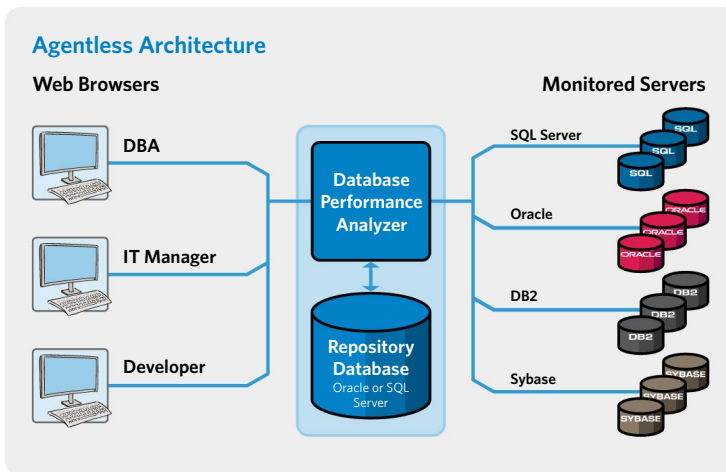
Database Performance Analyzer captures multiple dimensions of response time and server statistics in the performance warehouse repository. While many tools focus only on the current situation, Database Performance Analyzer is unique because it analyzes repetitive clues that explain why SQL Server response is slow. The graphical display makes it easy for anyone - DBAs, managers, and developers - to see the trends and patterns that tell the complete performance story.



Historical analysis exposes the root cause of problems.

Agentless Architecture

Database Performance Analyzer installs no software or agent on the monitored server, placing less than 1% load on the monitored database instance. Database Performance Analyzer server software is installed on a separate system, which can be any Windows®, UNIX®, or Linux® server, typically a test system under control of the DBA. Database Performance Analyzer data warehouse repository is configured on any Oracle® or SQL Server® instance, either on the same or different server as Database Performance Analyzer software. In multi-vendor environments, Oracle®, DB2, and SAP® ASE databases can also be monitored from the same Database Performance Analyzer server.



Database Performance Analyzer Agentless Architecture

Download a free product trial and start monitoring your environment in minutes.

 **DOWNLOAD FREE TRIAL**

Fully Functional for 14 Days

www.SolarWinds.com/DPA-Download

Features

- Identify SQL blocks and corresponding locks.
- View response time delays in real time, or history up to weeks and months.
- Automatically schedule graphical performance reports for delivery to any email address.
- Set proactive alerts to be notified of problems via email or SNMP trap.

Technical Specifications

- Monitored Instances: SQL Server 2008, 2012, and 2014. Database Performance Analyzer also monitors Oracle, SAP® ASE, and DB2 LUW from a single installation.
- No client software required, supported browsers include IE, Chrome, and Firefox.
- Database Performance Analyzer runs on Windows and UNIX/Linux servers. Highly recommended that Database Performance Analyzer system be "always on", not a laptop that is removed from the network or turned off.
- Database Performance Analyzer repository: SQL Server 2008, 2012, 2014 or Oracle 10g, 11g, 12c (single tenant). Repository can be on the same or a different server than Database Performance Analyzer software